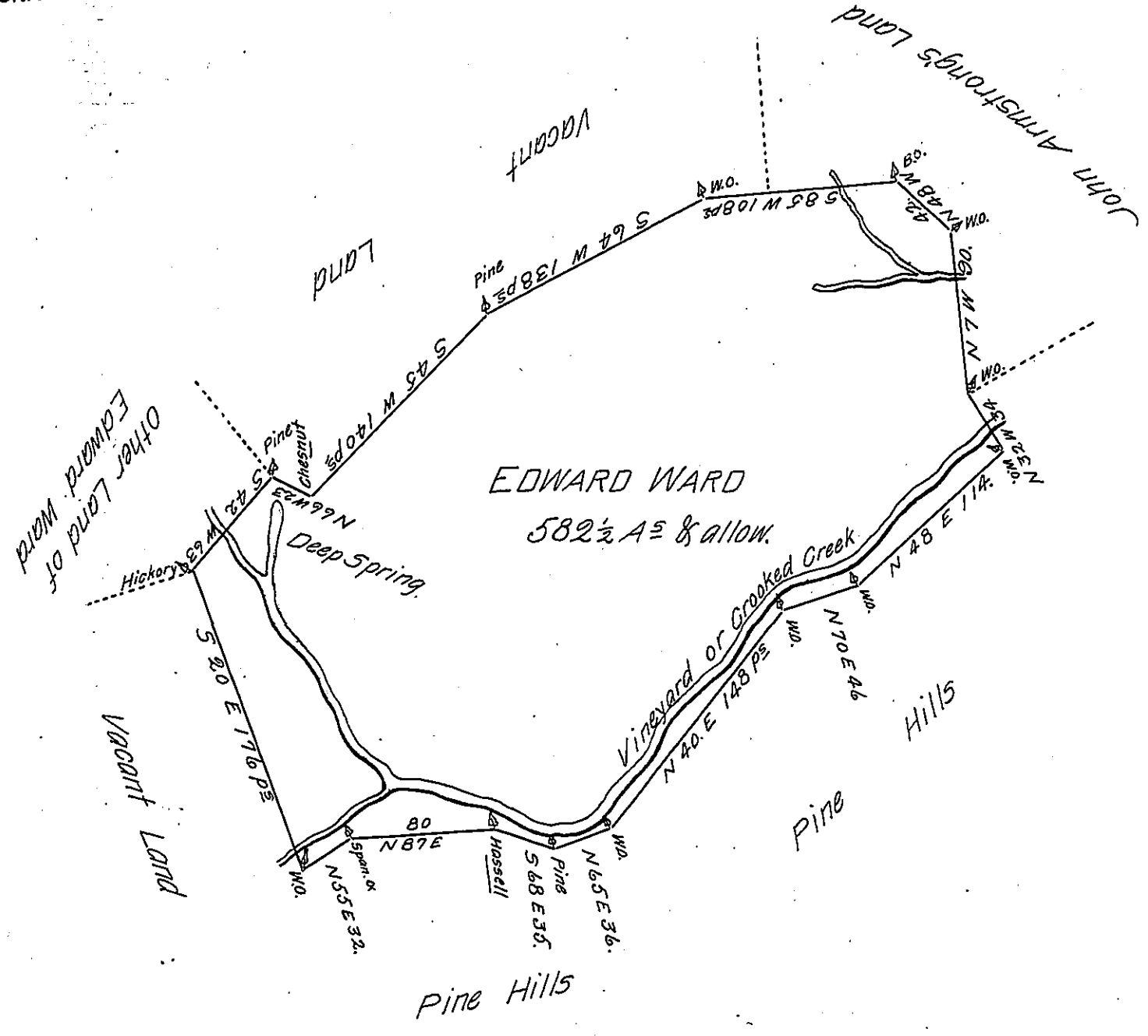


FORM NO. 1.



A Draught of a Tract of Land Situate, on Vineyard or Crooked Creek, in Woodcock Vally in the County of Cumberland called the Big Spring Tract containing Five hundred and eighty two Acres and a half and the usual allowance of six acres P.Ct for Roads & Ca. Surveyed the 12<sup>th</sup> day of May 1766 for Edward Ward in pursuance of a Warrant dated the 29<sup>th</sup> day of June 1762.

R. Richard Tea Dep<sup>y</sup> Survey<sup>r</sup>

To John Lukens Esq<sup>r</sup> Survey<sup>r</sup> General.

IN TESTIMONY that the above is a copy of the original remaining on file in the Department of Internal Affairs of Pennsylvania, made comformably to an Act of Assembly approved the 16th day of February 1833, I have hereunto set my hand and caused the Seal of said Department to be affixed at Harrisburg, this fourth day of March 1907.

*Isaac Brown*  
Secretary of Internal Affairs.